



Blackboard Vista: The Section Interface

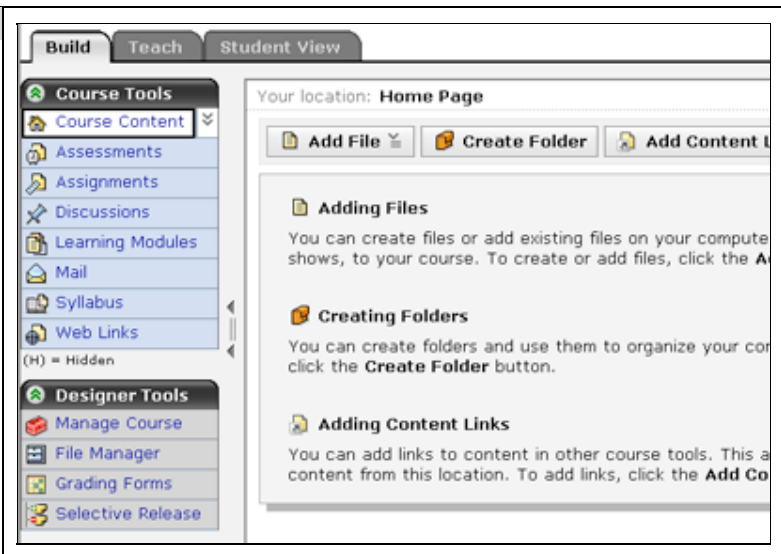
The interface is organized into three tabs: Build, Teach, and Student View. Related tasks are grouped under the relevant tab. All three tabs are visible because you are currently enrolled as the combined role of Section Designer/Section Instructor.

Users can also be enrolled in single roles:

- Users enrolled as Section Designers see only the Build tab and the Student View tab.
- Users enrolled as Section Instructors see only the Teach tab and the Student View tab.
- Users enrolled as a TA (Teaching Assistant) see only the Teach tab and the Student View tab.

Step 1: The Build Tab

The Build tab is where the designer creates, manages, and organizes course content. The designer can change the visual presentation of the course, add tools, and create content items such as quizzes or discussion topics.



Step 2: The Teach Tab

The Teach tab is where Instructor activities such as reviewing student work, managing grades, or interacting with students occurs. Access to instructor tools such as Assessment Manager, Assignment Dropbox, Grade Book, and Group Manager are found only within this tab.

The screenshot shows the 'Teach' tab selected in a learning management system. The interface is divided into three main sections: 'Build', 'Teach', and 'Student View'. The 'Teach' tab is active. On the left, there are two toolbars. The first, 'Course Tools', includes 'Course Content', 'Assessments', 'Assignments', 'Discussions', 'Learning Modules', 'Mail', 'Syllabus', and 'Web Links'. Below this is a note '(H) = Hidden'. The second toolbar, 'Instructor Tools', includes 'Manage Course', 'Assessment Manager', 'Assignment Dropbox', 'Grade Book', 'Grading Forms', 'Group Manager', 'Tracking', and 'Selective Release'. On the right, the main content area shows 'Your location: Home Page' and a message: 'This folder is currently empty. If you want to view course content, perform instructor tasks, click a link u'.

Step 3: The Student View Tab

The Student View tab enables you to experience the course as a student, including assessment and assignment submission.

The screenshot shows the 'Student View' tab selected in a learning management system. The interface is divided into three main sections: 'Build', 'Teach', and 'Student View'. The 'Student View' tab is active. On the left, there are two toolbars. The first, 'Course Tools', includes 'Course Content', 'Assessments', 'Assignments', 'Discussions', 'Learning Modules', 'Mail', 'Syllabus', and 'Web Links'. Below this is a note '(H) = Hidden'. The second toolbar, 'My Tools', includes 'My Grades' and 'My Progress'. On the right, the main content area shows 'Your location: Home Page' and a message: 'This folder is currently empty. Use the navigation to the left to navigate to course center'.

Your screens may look different depending upon your configuration.